

February 24, 2012

Rebecca Jones, Wildlife Biologist
California Department of Fish and Game
36431 41st Street East
Palmdale, California 93552

RE: Copper Mountain College Expansion Project: Compliance Inspection #38, February 2012
for State Incidental Take Permit No. 2081-2005-028-06.

Dear Ms. Jones,

The Copper Mountain Community College District (District or Permittee) has implemented monitoring of pertinent mitigation measures for the above referenced project to protect the desert tortoise (*Gopherus agassizii*) as authorized by Incidental Take Permit Number 2081-2005-028-06 from the California Department of Fish and Game (Department).

As given in the Department's permit, **Mitigation Measure 24, Condition 4.2.4.** (MM24/C4.2.4) *Compliance inspections shall be conducted a minimum of once per month after clearing, grubbing, and grading are completed. A monthly compliance report shall be submitted to the Department's Palmdale office at: Ms. Rebecca Jones, 36431 41st Street East, Palmdale, CA 93552, PH/FAX (661) 285-5867.*

PREVIOUS STATUS: Compliance inspection #37 was completed on 27 January 2012 and sent to Becky Jones soon thereafter. The Remodel For Efficiency (RFE) project is remodeling the library in a previously developed and separately fenced area of the Phase III campus buildings.

CURRENT STATUS: This letter documents the thirty-eighth monthly compliance inspection by Dr. Paul Delaney on 24 February 2012, as required by MM24/C4.2.4 given above. A single-page compliance inspection data sheet is attached to the end of this report.

DATE AND TIME OF COMPLIANCE INSPECTION #38: The inspection was completed by Delaney on 24 February 2012. Delaney was on-site from 9:11 a.m. to 1:39 p.m.

METHODS: Delaney walked the Translocation Area (TA) and Impact Area (IA) fencelines to check for tortoise sign, raven-predated tortoise carcasses, and fence integrity. He then walked into the IA to check on compliance issues near the Remodel For Efficiency (RFE) project.

RESULTS:

Personnel and Vehicles: Delaney tallied construction personnel and motor-operated vehicles inside the IA, and the cumulative data is presented in Table 1 below. During the current inspection 7 personnel were present and 6 (86%) were wearing tortoise awareness decals on their hardhats. Of the 10 vehicles observed, 7 (70%) had tortoise awareness placards, demonstrating good compliance.

TABLE 1. SUMMARY DATA FOR PERSONNEL AND VEHICLES						
Inspection # /Month	Personnel [# (%)]			Vehicles [# (%)]		
	#	With Decal	W/out Decal	#	With Placard	W/out Placard
1. Jan 2009	31*	27 (93%)	2 (7%)	54	10 (19%)	44 (81%)
2. Feb 2009	37*	26 (90%)	3 (10%)	49	22 (45%)	27 (55%)
3. Mar 2009	18	15 (100%)	3 unknown	40	14 (35%)	26 (65%)
4. Apr 2009	11	10 (91%)	1 (9%)	16	11 (69%)	5 (31%)
5. May 2009	19	18 (94%)	1 (6%)	25	18 (72%)	7 (28%)
6. Jun 2009	19	16 (84%)	3 (16%)	25	19 (76%)	6 (24%)
7. July 2009	16	13 (81%)	3 (19%)	22	18 (82%)	4 (18%)
8. Aug 2009	25	21 (84%)	4 (16%)	28	24 (86%)	4 (14%)
9. Sep 2009	14	12 (86%)	2 (14%)	21	17 (81%)	4 (19%)
10. Oct 2009	26	24 (92%)	2 (8%)	27	24 (89%)	3 (11%)
11. Nov 2009	25	23 (92%)	2 (8%)	28	21 (75%)	7 (25%)
12. Dec 2009	22	20 (91%)	2 (9%)	26	22 (85%)	4 (15%)
13. Jan 2010	18	15 (83%)	3 (17%)	21	20 (95%)	1 (5%)
14. Feb 2010	15	14 (93%)	1 (7%)	19	16 (84%)	3 (16%)
15. Mar 2010	12	10 (83%)	2 (17%)	16	13 (81%)	3 (19%)
16. Apr 2010	11	10 (91%)	1 (9%)	14	12 (86%)	2 (14%)
17. May 2010	10	9 (90%)	1 (10%)	17	13 (77%)	4 (23%)
18. June 2010	15	13 (87%)	2 (13%)	17	14 (82%)	3 (18%)
19. July 2010	13	12 (92%)	1 (8%)	15	14 (93%)	1 (7%)
20. Aug 2010	11	9 (82%)	2 (18%)	12	10 (83%)	2 (17%)
21. Sep 2010	10	9 (90%)	1 (10%)	12	10 (83%)	2 (17%)
22. Oct 2010	10	8 (80%)	2 (20%)	12	9 (75%)	3(25%)
23. Nov 2010	0**	N.A.	N.A.	4	4 (100%)	0 (0%)
24. Dec 2010	6	5 (83%)	1 (17%)	7	6 (86%)	1 (14%)
25. Jan 2011	5	4 (80%)	1 (20%)	9	7 (78%)	2 (22%)
26. Feb 2011	9	7 (78%)	2 (22%)	9	7 (78%)	2 (22%)
27. Mar 2011	3	3 (100%)	0 (0%)	4	3 (75%)	1 (25%)
28. Apr 2011	9	8 (89%)	1 (11%)	12	10 (83%)	2 (17%)
29. May 2011	6	5 (83%)	1 (17%)	8	6 (75%)	2 (25%)
30. June 2011	6	5 (83%)	2 (17%)	5	4 (80%)	1 (20%)
31. July 2011	3	3 (100%)	0 (0%)	5	4 (80%)	1 (20%)
32. Aug 2011	4	3 (75%)	1 (25%)	7	5 (71%)	2 (29%)
33. Sep 2011	6	5 (83%)	1 (17%)	7	5 (71%)	2 (29%)
34. Oct 2011	9	8 (89%)	1 (11%)	10	9 (90%)	1 (10%)
35. Nov 2011	0**	N.A.	N.A.	2	2 (100%)	0 (0%)
36. Dec 2011	6	5 (83%)	1 (17%)	8	6 (75%)	2 (25%)
37. Jan 2012	2	2 (100%)	0 (0%)	4	3 (75%)	1 (25%)
38. Feb 2012	7	6 (86%)	1 (14%)	10	7 (70%)	3 (30%)

*37 = Personnel having lunch and not wearing hard hats, so total personnel with and without hard hat decals is less than the total number of personnel. **0 = Construction personnel absent due to Thanksgiving holidays.

Education Program: *As per MM4/C4.1.4, the Permittee is required to administer education programs.* Field Contact Representative (FCR) Dan Cain conducts most of these programs as needed. He maintains the comprehensive sign-up sheet should the Department want to see that.

Trash Abatement: *As per MM5/C4.1.7, the Permittee is required to maintain a litter-free environment to avoid attracting opportunistic predators.* College volunteers remove litter during periodic abatement efforts throughout the year. During the current inspection, Delaney tallied 39 pieces of litter in the IA and 19 in the TA (see Table 2 for cumulative information.)

TABLE 2. SUMMARY DATA FOR TRASH & LITTER		
Visit #/Date	Litter inside Translocation Area	Litter inside Impact Area
1. Jan 2009	18 (11%*)	138 (89%)
2. Feb 2009	15 (29%)	36 (71%)
3. Mar 2009	9 (14%)	56 (86%)
4. Apr 2009	4 (10%)	39 (90%)
5. May 2009	8 (21%)	31 (79%)
6. June 2009	34 (37%)	59 (63%)
7. July 2009	15 (35%)	28 (65%)
8. Aug 2009	25 (43%)	33 (57%)
9. Sep 2009	41 (38%)	68 (62%)
10. Oct 2009	27 (23%)	89 (77%)
11. Nov 2009	26 (35%)	49 (65%)
12. Dec 2009	17 (34%)	33 (66%)
13. Jan 2010	33 (36%)	58 (64%)
14. Feb 2010	51 (38%)	84 (62%)
15. Mar 2010	22 (31%)	49 (69%)
16. Apr 2010	5 (19%)	21 (81%)
17. May 2010	12 (28%)	31 (72%)
18. June 2010	11 (28%)	28 (72%)
19. July 2010	29 (35%)	55 (65%)
20. Aug 2010	31 (28%)	79 (72%)
21. Sep 2010	19 (27%)	51 (73%)
22. Oct 2010	25 (22%)	87 (78%)
23. Nov 2010	21 (35%)	39 (65%)
24. Dec 2010	29 (36%)	51 (64%)
25. Jan 2011	10 (19%)	42 (81%)
26. Feb 2011	14 (19%)	59 (81%)
27. Mar 2011	17 (29%)	41 (71%)
28. Apr 2011	37 (34%)	71 (66%)
29. May 2011	23 (32%)	49 (68%)
30. June 2011	25 (27%)	69 (73%)
31. July 2011	37 (38%)	61 (62%)
32. Aug 2011	27 (34%)	53 (66%)
33. Sep 2011	17 (30%)	39 (70%)
34. Oct 2011	31 (32%)	65 (68%)
35. Nov 2011	25 (35%)	47 (65%)
36. Dec 2011	29 (35%)	53 (65%)
37. Jan 2012	15 (23%)	51 (77%)
38. Feb 2012	19 (33%)	39 (67%)

Translocation Area: *As per MM9/C4.3.1, the Permittee is required to establish the Translocation Area (TA) and maintain it for tortoise conservation.* Dan Cain previously registered the conservation easement for 84.32 acre TA with San Bernardino County.

Permanent Fencing Around Completed Campus Expansion: The Service previously approved a permanent smooth-wire fence, with tortoise-exclusion fencing attached to the bottom, around the completed expansion site to exclude tortoises from that area.

Raven Predation of Juvenile Desert Tortoises In Translocation Area and Campus Area: An unmarked juvenile tortoise (MCL 43 mm) with diagnostic signs of raven predation was found on a bush in the Impact Area on February 17 2012 by college staff and given to Delaney (see photo in attachments). Two instances of raven predation were documented in 2009 (one a marked tortoise, CMC9) and none in 2010. Two unmarked, subadult tortoise carcasses were found during the 2011 annual survey, including one that may have been raven-predated. No other marked tortoise carcasses were found, which suggests that tortoise translocation into the area in 2008 and subsequent monitoring efforts have not adversely affected the persistence of tortoises in the conservation area. The District biologist conducts weekly raven/predator surveys to check for predated tortoises and minimize predator subsidies.

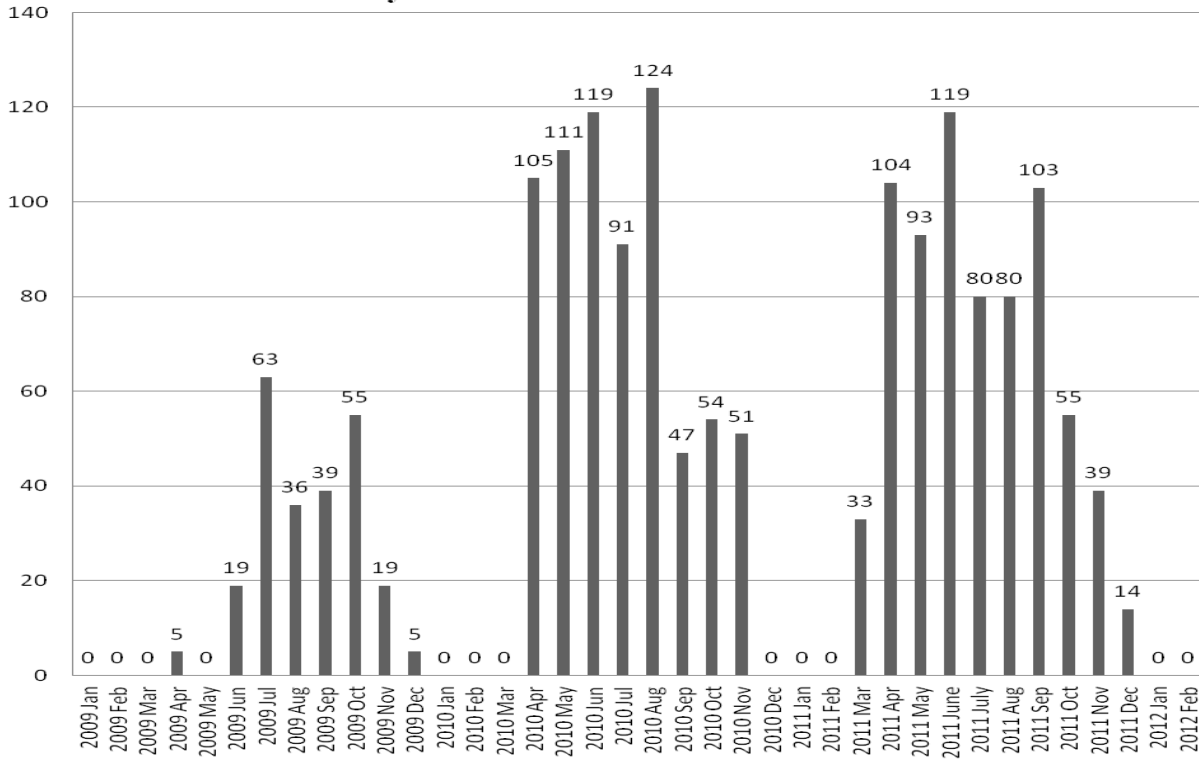
Raven Population on Campus: During the current month’s raven/predator surveys the raven population on campus consisted of 2 birds, who moved between perches located at the: 1) Autoshop Building, 2) Bell Center, 3) utility poles in campus parking lots and north of Whitmore Road, 4) campus water tank, and 5) trees at the intersection of Highway 62 and Rotary Way. Campus dumpsters and construction sites were often checked to ensure they were not subsidizing ravens.

GPS Locations of Tortoise Observations From the Current Monthly Compliance Survey: The GPS locations of tortoise sign found during the current monthly compliance inspection are noted in Table 3 below.

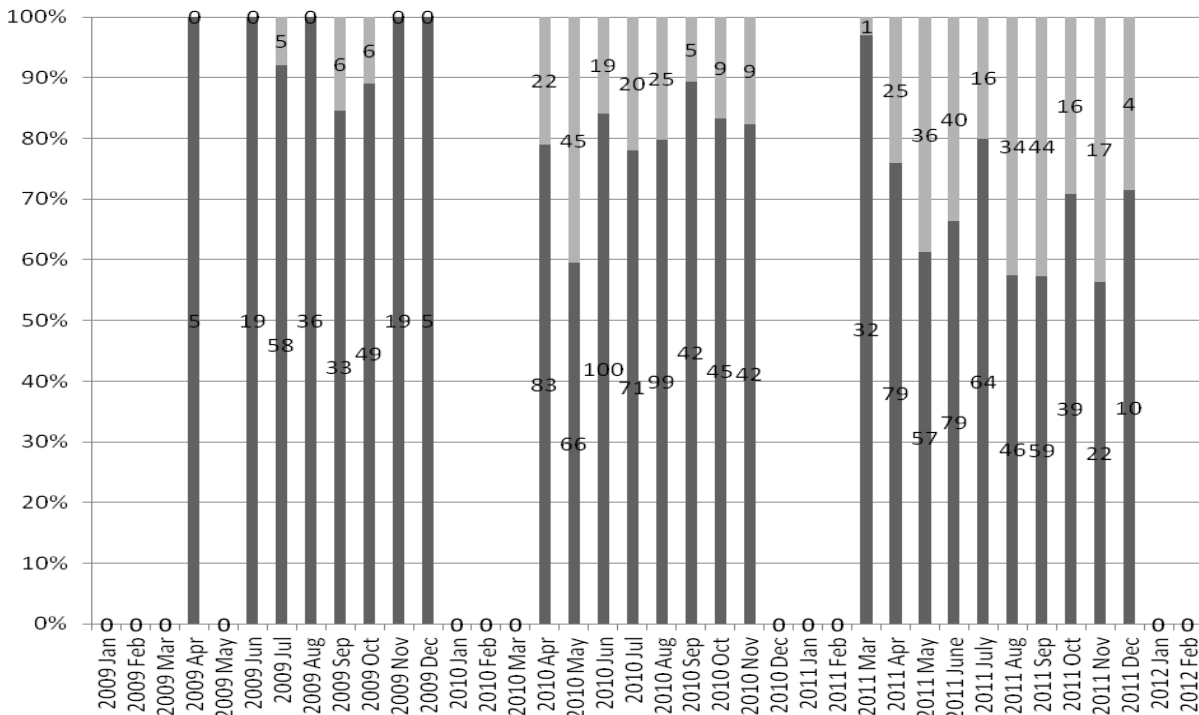
TABLE 3. GPS LOCATION DATA FOR TORTOISE SIGN OBSERVATIONS DURING THE CURRENT MONTHLY COMPLIANCE INSPECTION		
Inspection#/Date	Type of Tortoise Sign	GPS Location (NAD 83)
38/ Feb 2012	Unmarked juvenile desert tortoise, MCL 46 mm (estimated from photo in attachments)	2184 E/7441 N

Cumulative Tortoise Observations From Monthly Compliance Surveys: *As per MM10/C4.3.2, all tortoises are to be translocated out of the IA into the TA and per MM21/C4.3.9 and MM27/C4.2.6, the FCR and others are to be on the lookout for tortoises.* The cumulative frequency distribution of total desert tortoise scat from monthly compliance surveys from 2009 to the present, using 10-meter wide transects along the TA fencelines, are depicted in Graphs 1 and 2 below.

Graph 1. Total Desert Tortoise Scat Detected During Monthly Fenceline Surveys of CMC Translocation Area 2009-2012.



Graph 2. Adult (Dark Bars) Versus Subadult (Light Bars) Tortoise Scat Found During Monthly Fenceline Surveys of CMC Translocation Area 2009-2012.



The total quantities of tortoises and tortoise signs observed during the monthly compliance (fenceline) surveys are shown in Table 4 below. (Note: subadult and juvenile scat are combined in one category as Subadult Scat). GPS locations of signs were listed in monthly reports.

Table 4. Desert Tortoise Signs Observed on Monthly Surveys of the CMC Translocation Area Fencelines, January 2009 to January 2012.

Month	Total Scat	Adult Scat	Subadult Scat	Tracks	Burrows	Burrow Starts	Tortoises
2009 Jan	0	0	0	0	0	0	0
2009 Feb	0	0	0	0	0	0	0
2009 Mar	0	0	0	7	0	0	0
2009 Apr	5	5	0	4	1	0	0
2009 May	0	0	0	1	1	0	3
2009 Jun	19	19	0	5	0	0	0
2009 Jul	63	58	5	1	0	0	0
2009 Aug	36	36	0	0	0	0	0
2009 Sep	39	33	6	2	0	0	0
2009 Oct	55	49	6	0	0	0	0
2009 Nov	19	19	0	2	1	0	1
2009 Dec	5	5	0	0	0	0	0
2010 Jan	0	0	0	0	0	0	0
2010 Feb	0	0	0	0	0	0	0
2010 Mar	0	0	0	3	0	0	0
2010 Apr	105	83	22	0	1	4	2
2010 May	111	66	45	8	2	0	3
2010 Jun	119	100	19	6	1	5	0
2010 Jul	91	71	20	3	0	3	0
2010 Aug	124	99	25	3	1	0	1
2010 Sep	47	42	5	4	4	1	0
2010 Oct	54	45	9	1	3	0	1
2010 Nov	51	42	9	0	2	0	1
2010 Dec	0	0	0	0	0	0	0
2011 Jan	0	0	0	0	0	0	0
2011 Feb	0	0	0	0	0	0	0
2011 Mar	33	32	1	4	0	0	2
2011 Apr	104	79	25	3	1	1	2
2011 May	93	57	36	0	2	2	0
2011 June	119	79	40	0	0	1	0
2011 July	80	64	16	0	0	2	0
2011 Aug	80	46	34	0	3	0	0
2011 Sep	103	59	44	0	1	0	0
2011 Oct	55	39	16	0	2	0	1
2011 Nov	39	22	17	0	1	0	0
2011 Dec	14	10	4	0	0	0	0
2012 Jan	0	0	0	0	0	0	0
2012 Feb	0	0	0	0	0	0	1

Translocation Area Monitoring Program: *As per MM22/C4.3.11, the District is required to monitor all tortoises moved into the TA and to perform annual surveys in the spring. The first three annual surveys (2009, 2010, and 2011) were documented in reports submitted to the Department and the Service. Focused TA fence-line surveys for tortoises and sign are performed monthly during compliance inspections (see Table 3 and Graphs 1-2).*

Translocation Area Fencing: *As per MM11/C4.3.3, MM20/C4.3.8, and MM23/C4.3.4, the Permittee is required to install and maintain fences around both the TA and IA. The TA fencelines are intact and District personnel continue to regularly monitor their condition.*

Purchase Compensation Lands: *As per MM12/C5, the Permittee is required to acquire 80 acres of habitat management lands to offset impacts resulting from campus expansion. The 80-acre compensation parcel located in Thermal Canyon was transferred to the National Park Service on 26 March 2009, which satisfied the Department's requirement for compensation.*

Purchase Mitigation Lands: *In June 2009 the Service approved a minor amendment to the Habitat Conservation Plan accepting the District's partnership with the Mojave Desert Land Trust to jointly purchase 955 acres of additional tortoise mitigation land. This land on Quail Mountain was deeded to the adjacent Joshua Tree National Park, to fulfill District's mitigation requirement to protect 30 acres of desert tortoise habitat.*

Monthly Compliance Inspections: *As per MM24/C4.2.4, compliance inspections are to be conducted monthly. This report is the 38th of 48 anticipated monthly compliance reports.*

Failure to Implement Mitigation Measures: *As per MM26/C4.2.3, the Permittee is required to notify the Department immediately if any mitigation measures have not been implemented as give in the Permit. Thus far, all mitigation measures have been implemented in a timely manner.*

Stop Construction Activities: *As per MM28/C4.1.6, the Designated Biologist and FCR have authority to stop any construction activity that is not in compliance with the Permit. There has been no need to stop construction activities during any of compliance inspections.*

Accessing the Construction Site Via Existing Routes: *As per MM29/C4.1.9, all project-related personnel are to access the site through approved routes and there is to be no cross-country travel. The current paved access routes do not constitute a hazard to desert tortoises.*

Handling Injured Tortoises: *As per MM32/C4.3.10 and MM33/C4.2.8, all injured tortoises are to be taken to a local veterinarian and the Department contacted and all dead tortoises are to be collected and the Department contacted. To our knowledge, there have been no tortoises injured or accidentally killed as a result of expansion activities.*

Final Mitigation Report: *As per MM37/C4.2.7, a final mitigation report must be submitted to the Department no later than 45 days after completion of each phase. No phases have yet been completed, so it is too early to implement this measure.*

Non-Native Weed Management in the TA: *Although the Department’s Permit does not identify any weed management measures, Section 3.2.2d.8 of the Environmental Assessment identifies the following Translocation Area Management action: “Perform an annual assessment to determine the presence of non-native invasive plant species within the Translocation Area.”* During 2009-2010, volunteers removed 6069 individual non-native Moroccan mustards (*Brassica tournefortii*) and tansy mustards (*Descurainia pinnata*), growing along TA fencelines. During 2011-2012 compliance inspections few invasive mustard plants were observed there, so prior weed mitigation efforts were considered successful.

Firearms and Domestic Dogs: *As per MM18/C4.1.5, the Permittee is required to prohibit firearms and domestic dogs from the site.* Canid signs observed inside the TA and IA during compliance inspections are summarized below in Table 5. No evidence of canid predation on desert tortoises was found during the current compliance inspection.

TABLE 5. SUMMARY DATA FOR CANIDS (DOGS & COYOTES)		
Inspection # /Date	Canid Tracks in Translocation Area	Canid Tracks in Impact Area
1. Jan 2009	4 (29%*)	10 (71%)
2. Feb 2009	0 (0%)	3 (100%)
3. Mar 2009	1 (25%)	3 (75%)
4. Apr 2009	1 (50%)	1 (50%)
5. May 2009	2 (67%)	1 (33%)
6. June 2009	3 (75%)	1 (25%)
7. July 2009	0 (0%)	0 (0%)
8. Aug 2009	3 (75%)	1 (25%)
9. Sep 2009	2 (66%)	1 (33%)
10. Oct 2009	1 (50%)	1 (50%)
11. Nov 2009	2 (66%)	1(33%)
12. Dec 2009	1 (50%)	1 (50%)
13. Jan 2010	1 (50%)	1 (50%)
14. Feb 2010	2 (40%)	3 (60%)
15. Mar 2010	3 (60%)	2 (40%)
16. Apr 2010	1 (50%)	1 (50%)
17. May 2010	0 (0%)	0 (0%)
18. June 2010	3 (60%)	2 (40%)
19. July 2010	1 (50%)	1 (50%)
20. Aug 2010	2 (67%)	1 (33%)
21. Sep 2010	1 (50%)	1 (50%)
22. Oct 2010	1 (50%)	1 (50%)
23. Nov 2010	1 (33%)	2 (67%)
24. Dec 2010	1 (50%)	1 (50%)
25. Jan 2011	2 (50%)	2 (50%)
26. Feb 2011	1 (25%)	3 (75%)
27. Mar 2011	1 (50%)	1 (50%)
28. Apr 2011	1 (50%)	1 (50%)
29. May 2011	0 (0%)	1 (100%)
30. June 2011	1 (50%)	1 (50%)
31. July 2011	1 (50%)	1 (50%)
32. Aug 2011	0 (0%)	1 (100%)
33. Sep 2011	0 (0%)	0 (0%)
34. Oct 2011	1 (50%)	1 (50%)
35. Nov 2011	1 (50%)	1 (50%)
36. Dec 2011	2 (50%)	2 (50%)
37. Jan 2012	1 (33%)	2 (66%)
38. Feb 2012	1 (33%)	2 (66%)

REMEDIAL ACTIONS:

The District and its subcontractors have conscientiously implemented mitigation measures since the previous compliance inspection, but several issues need to be addressed on an ongoing basis:

Translocation Area Fence Maintenance: District personnel continue to regularly monitor the Translocation Area (TA) fencelines.

Trash Abatement: Personnel from the District removed litter from the IA and TA during mitigation and monitoring activities this month, and will continue these efforts.

Invasive Plant Species (Weed) Abatement: Delaney will monitor the effectiveness of weed abatement from year to year, and recruit volunteers to remove weeds from the TA.

Minimizing Predator Subsidies: An unmarked, raven-predated tortoise carcass (MCL 43 mm) was found near the western boundary of the Impact Area by college staff on 17 February 2012. There were two ravens present on campus in February 2012. The District will continue to focus weekly raven surveys on the TA fence-lines to check for raven-predated tortoises and minimize predator subsidies on campus.

Monitoring Tortoise Population For Infectious Diseases: No infected tortoises have been found since a *Mycoplasma*-antibody-positive pet tortoise was removed from the Translocation Area (TA) in April 2010. Ticks (*Ornithodoros* sp.) were found on TA tortoise CMC-6 in April 2011. The Department and the Service recently approved a minor amendment allowing blood testing and telemetry of desert tortoises within the TA.

Unmarked Juvenile Tortoise: An unmarked, live juvenile desert tortoise (MCL 46 mm, estimated from photo) was found in the TA by Delaney on 24 February 2012 (see photo).

Scat Removal: After discussion and approval by the Department (Becky Jones) and the Service (Brian Croft), Delaney removed old scat from along the TA fenceline on 24 February 2012, to facilitate detection on new scat on subsequent surveys.

This concludes the 38th of 48 anticipated monthly compliance inspections and reports for authorized expansion activities. This report was completed by Paul Delaney and reviewed by Dan Cain and Ed LaRue, who may be contacted using the information below.

Dan Cain, Field Contact Representative
Office phone: (760) 366-5295
Fax: (760) 366-5252
Cell phone: (760) 910-3181
Email: dcain@cmccd.edu

Ed LaRue, Authorized Biologist
Office phone: (760) 249-4948
Fax: (760) 249-4948
Cell phone: (760) 964-0012
Email: ed.larue@verizon.net

Please contact me if you have questions or comments.

I certify that, to the best of my knowledge, after appropriate inquiries of all relevant persons involved in the preparation of this report, the information submitted is accurate and complete.

Respectfully Submitted,

Paul M. Delaney Ph.D.

Paul M. Delaney Ph.D.
Professor of Biology
Copper Mountain College
6162 Rotary Way, PO Box 1398
Joshua Tree CA 92252

Email: pdelaney@cmccd.edu
Office phone: (760) 366-3791, ext. 0257
Fax: (760) 366-3973

Cc: Ms. Judy Hohman
U.S. Fish and Wildlife Service
2493 Portola Road, Suite B
Ventura, California 93003

Ms. Kimberly Nicol, Regional Manager
Eastern Sierra/Inland Deserts Region
4665 Lampson Avenue, Suite J
Los Alamitos CA 90720

General Counsel
Department of Fish and Game
1416 Ninth Street, 12th Floor
Sacramento CA 95814

Habitat Conservation Planning Branch
1416 Ninth Street, Suite 1260
Sacramento CA 95814

Superintendent
Joshua Tree National Park
74485 National Park Drive
Twentynine Palms, CA 92277

Mr. Edward L. LaRue, Jr.
Circle Mountain Biological Consultants, Inc.
P.O. Box 3197
Wrightwood, CA 92397

Mr. Brian Croft
Fish and Wildlife Biologist
U.S. Fish and Wildlife Service
602 Tippecanoe Avenue
San Bernardino, California 92408

Ms. Rebecca Jones, Wildlife Biologist
California Department of Fish & Game
36431 41st Street East
Palmdale, California 93552

Mr. Carl Benz
U.S. Fish and Wildlife Service
2493 Portola Road, Suite B
Ventura, California 93003

Dr. Roger Wagner, Mr. Dan Cain
Copper Mountain College
6162 Rotary Way
Joshua Tree, CA 92252

List of Attachments

February 2012 Compliance Inspection Form
Photos



Copper Mountain Community College District (CMCCD)
State Incidental Take Permit No. 2081-2005-028-06
Federal Incidental Take Permit No. TE-143444-0
Compliance Inspection Report No. 38 For February 2012

Location: CMCCD Construction Site		Monitor: Paul Delaney Ph.D.
Date: 24 February 2012	Start Time: 9:11 a.m.	End Time: 1:39 p.m.
Temperature (°F): 60.1	Cloud Cover (%): 0%	Wind Speed (mph): 0
Rel. Humidity (%): 45.7	Baro. Press. (in Hg): 27.63	Wind Direction: NA
Previous Status: See prior compliance inspection report of 27 January 2012 .		
Current Status: Monitoring and compliance activities since the last report noted below.		
Methods: Monitor walked project site.		Results: See below.
# Personnel in Impact Area (IA): 7	# Personnel in IA with Tortoise Hardhat Decal: 6	Personnel in Tortoise Education in Month: on file
# Vehicles in Impact Area (IA): 10	# Vehicles in IA with Tortoise Placards: 7	Vehicles Speeding: Yes <input type="checkbox"/> No X
Fencing Intact: Yes X No <input type="checkbox"/>	Firearms Observed on Site: Yes <input type="checkbox"/> No X	Mitigation Land Purchase: Ongoing Completed X
Trash Abatement : # Pieces in TA: 19 IA: 39	# Canid Prints: In TA: 1 IA: 2	Ravens or Subsidies On Site: Yes X 2 ravens No
Translocation Area (TA) Status Quo: Yes X No <input type="checkbox"/>	TA Gates Closed After Transit: Yes X No <input type="checkbox"/>	Pond Subsidizing Predators: Yes <input type="checkbox"/> No X
Project Activity Stopped: Yes <input type="checkbox"/> No X	Weekly Fence Inspection Completed: Yes X No <input type="checkbox"/>	Weekly Raven Census Performed: Yes X No <input type="checkbox"/>
Tortoise/Sign Observations: Yes X See report No <input type="checkbox"/>	Tortoise/s Handled: Yes <input type="checkbox"/> No X	Tortoise/s Ill or Injured: Yes <input type="checkbox"/> No X
IA Accessed By Existing Routes: Yes X No <input type="checkbox"/>	Construction Activities Confined to IA: Yes X No <input type="checkbox"/>	Hazardous Waste Cleanups: Yes <input type="checkbox"/> No <input type="checkbox"/> NA X
Other Abatement Observed: Yes <input type="checkbox"/> No X	Remedial Action Suggested:	Final Mitigation Report Too Early to Perform: Yes X
Minimization Successful to Date: Yes X No <input type="checkbox"/>	Violations Observed: Yes <input type="checkbox"/> No X	Adaptive Management Needed: Yes <input type="checkbox"/> No X
Additional Notes: An unmarked juvenile tortoise was observed in the Translocation Area (TA) today. No evidence was found of raven or canid predation on desert tortoises in the TA. No evidence was found of tortoises with respiratory infections or tick infestations. A raven-predated unmarked juvenile tortoise carcass was found in the Impact Area this month.		
Certification: "I certify that, to the best of my knowledge, after appropriate inquiries of all relevant persons involved in the preparation of this report, the information submitted is true, accurate and complete". Signature: Paul Delaney Ph.D.		

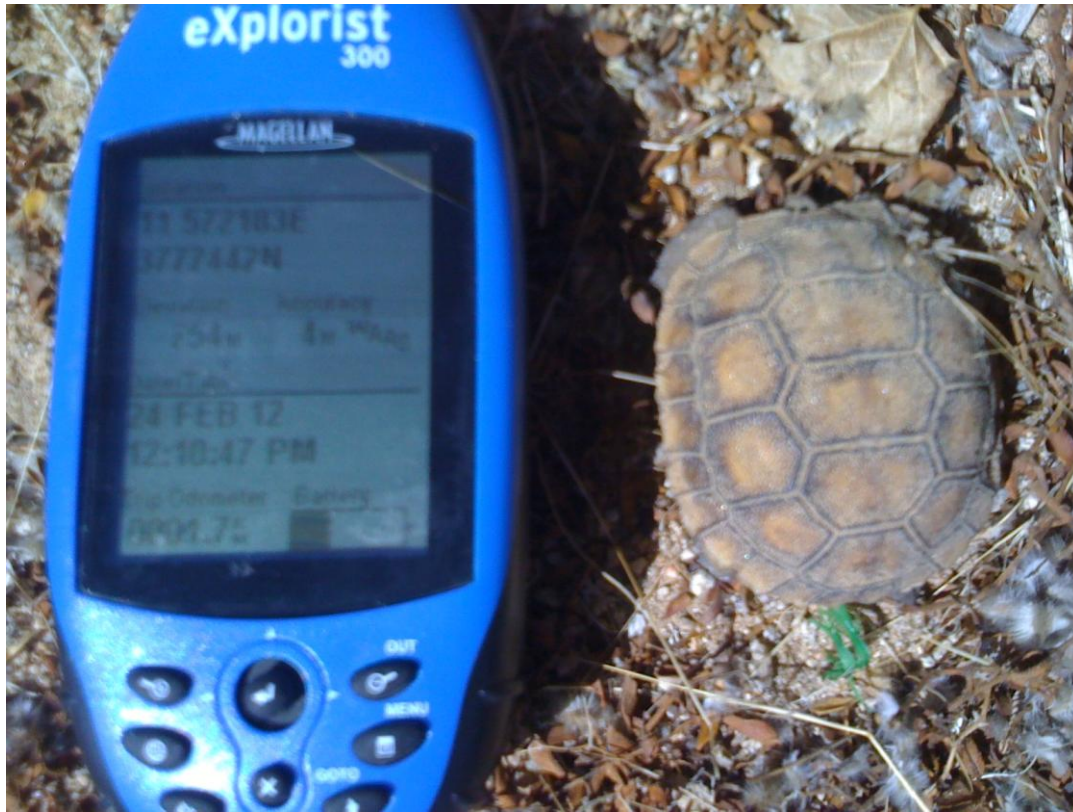


Photo 1. Unmarked live juvenile desert tortoise found in Translocation Area, 24 February 2012.

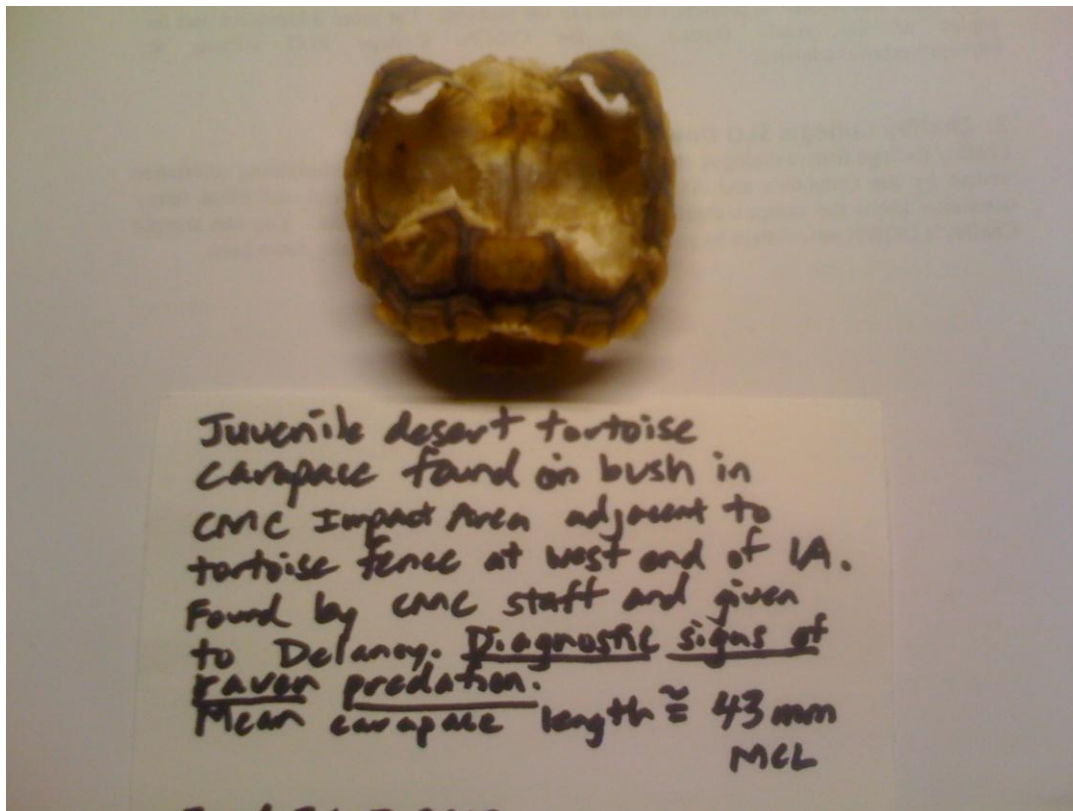


Photo 2. Raven-predated juvenile tortoise carcass found in Impact Area, 17 February 2012.